



Price range: \$265,000 - \$455,000

Designed by Lew Oliver, Nest - Built by Martin Dodson Homes



- Smaller Footprint Cottages
- EarthCraft Certified Green Building
 - Passive Solar
 - Geothermal Heating
- Reclaimed Wastewater & Stormwater for Irrigation
- Energy Star & Water Sense Appliances & Fixtures
- “Night Sky” Uplighting Regulations = Bright, Star-filled Skies
- Walking Distance to Organic Farm, 6-Acre Lake, Restaurants, Shops, Art Galleries, & Spa
 - Minimal Grading & Disturbance of the Land
- Natural Landscaping includes Edible Fruit Bushes & Trees
 - Concierge Recycling and Compost Service
 - Underground Utilities
 - Pre-Wiring for 21st Century Technology

Call Serenbe Real Estate for more information or to set up a site visit: 770.463.9997.

introducing
the Nest



a gathering of cottages in serenbe

At Serenbe, we constantly strive to introduce smart, environmentally responsible approaches to community development. Our newest product is a group of 15 small footprint cottages with the latest environmental features -- demonstrating top quality green construction and thoughtful land planning.

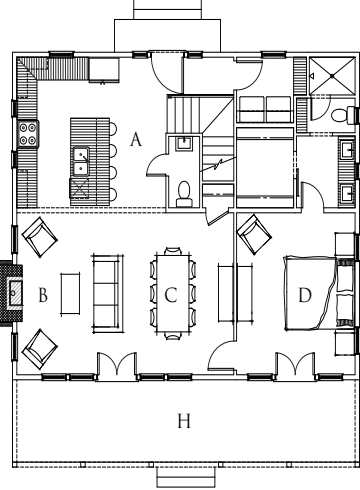
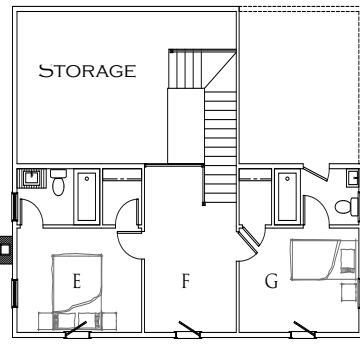
These cottages respond to an emerging value shift -- homeowners realizing “home” is more than a structure, and a true community with neighbors as friends is important. Our cottages have front porches and sidewalks, encouraging interaction with neighbors. Trails connect homes to nature and to modern amenities of good food, art galleries and shops. Children can walk to the bakeshop or navigate a stream; adults can have a *New York Times*’ recommended meal or lose themselves in the seclusion of preserved forestland. Spend a day volunteering on the Serenbe Farm, just across the street. Go fishing in the 6-acre lake, just outside your door.

The Nest plans, designed by Lew Oliver, are perfect for Serenbe -- a place where life resembles a simpler time, yet is a national model for environmentally responsible and healthy living.

Come envision your life here.

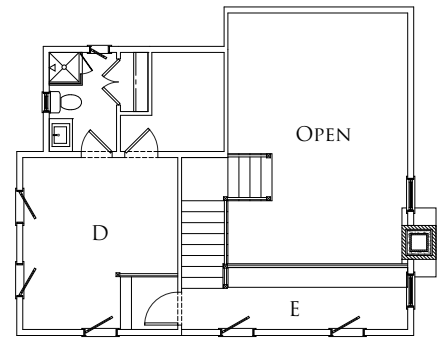
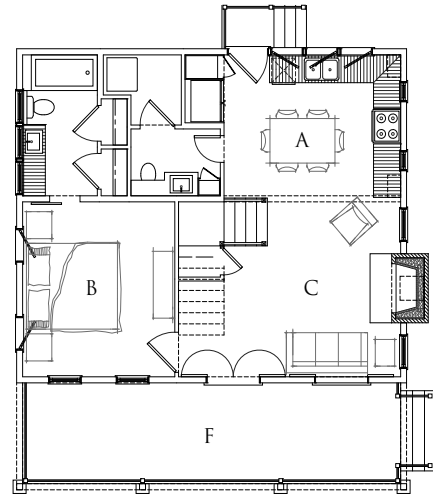
COTTAGE A

- 3 bedrooms
- master on main



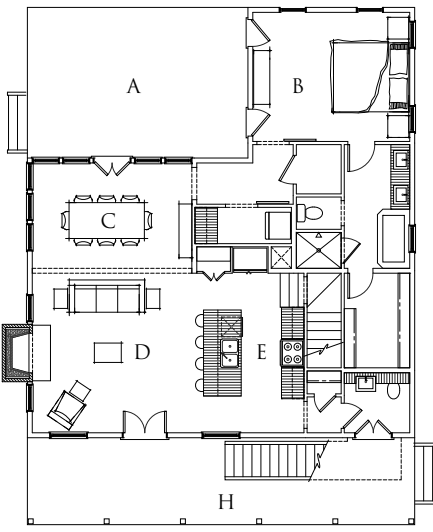
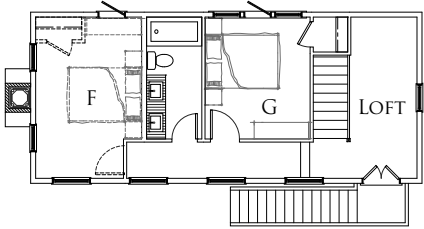
COTTAGE D

- 2 bedrooms
- master on main



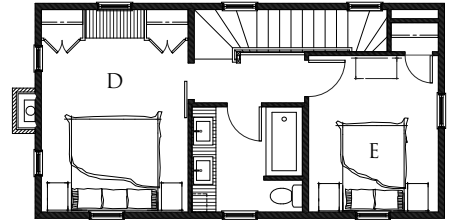
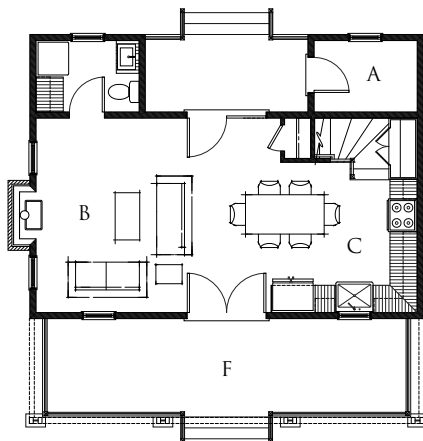
COTTAGE B

- 3 bedrooms
- master on main



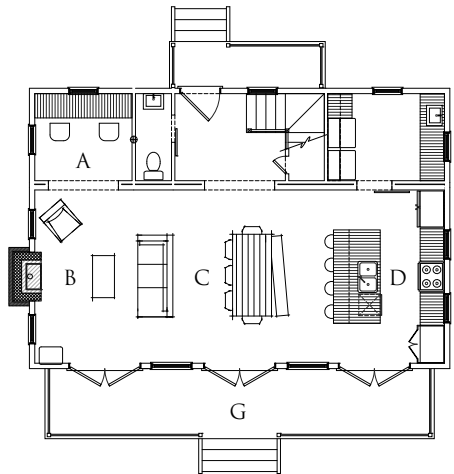
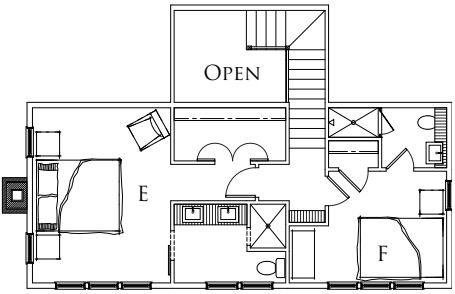
COTTAGE E

- 2 bedrooms
- extra storage



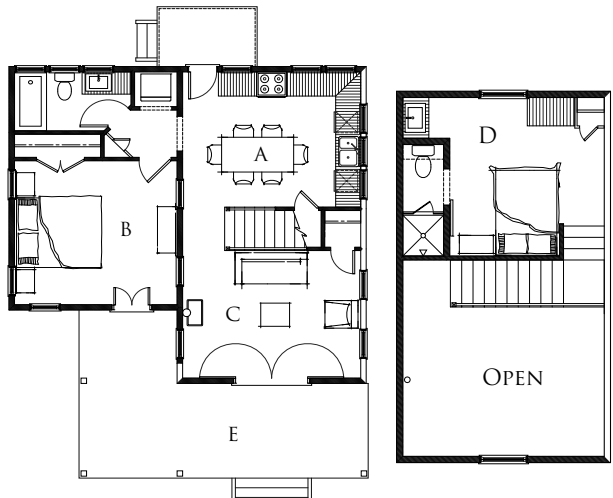
COTTAGE C

- 2 bedrooms
- office



COTTAGE F

- 2 bedrooms
- master on main



A 1% transfer fee is applicable to all sales. A yearly HOA fee is applicable to all sales. The information in this folder is believed to be accurate but is not warranted and is subject to errors, change, omissions, prior sale and withdrawals without notice.