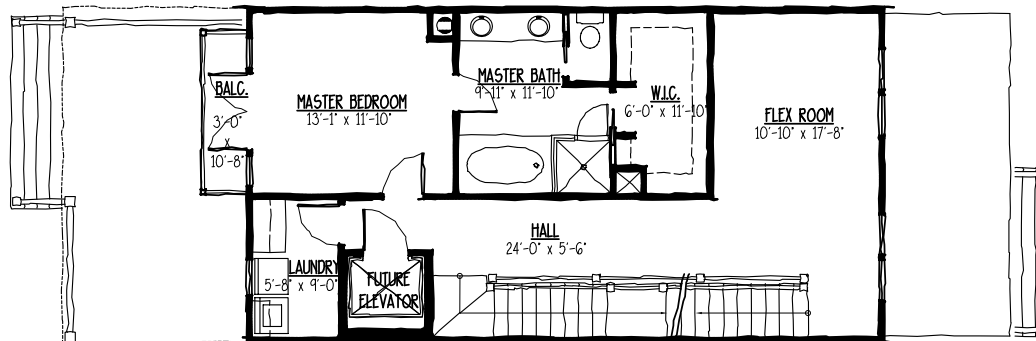
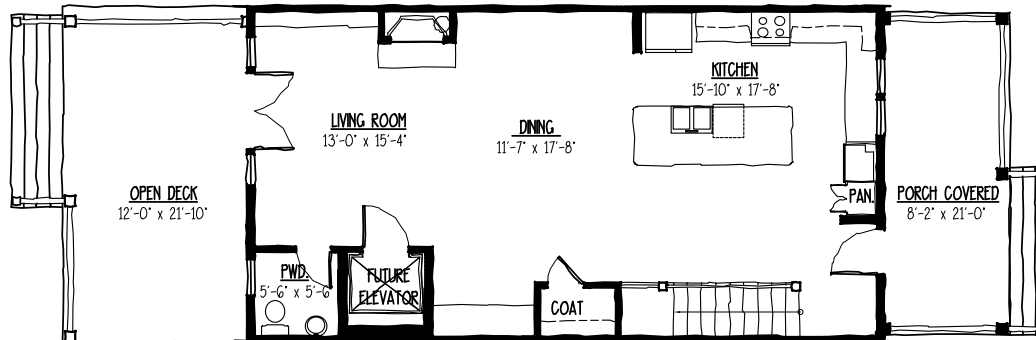


THIRD FLOOR PLAN

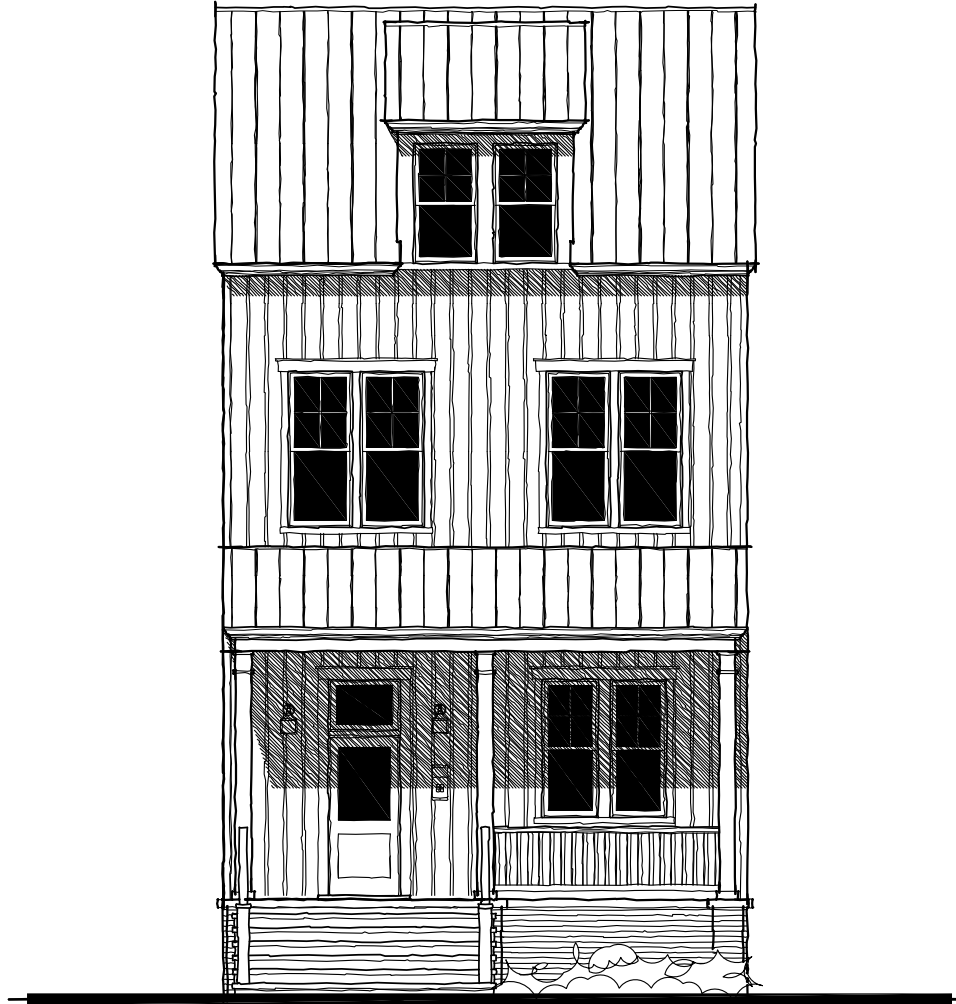


SECOND FLOOR PLAN



FIRST FLOOR PLAN

LOT 149- Serenbe Grange Townhomes



FRONT ELEVATION

LOT 149- Serenbe Grange Townhomes

In keeping with our philosophy, Capstone Partners hand selected a team of professionals to custom design The Grange Townhomes. These professionals who specialize in thoughtful and unique design; acclaimed architects Allison Ramsey, renown national designer Elizabeth Diehl of Diehl designs and expert landscape architect, Steve Hausman of Southeastern Landscaping worked together to create the Townhomes.

Lavender
10659 Serenbe Lane

Interior Features

- ◆ Dramatic 12 foot ceilings on first floor, 10 foot ceilings on second, and 8 foot ceilings on third
- ◆ Custom designed master closets
- ◆ Oak staircase with wood kneewall design
- ◆ Gorgeous site finished random width oak hardwood flooring throughout home
- ◆ Separate laundry room with tiled floor designed by Elizabeth Diehl
- ◆ Lighting and paint colors selected by professional interior designer
- ◆ Round oil rubbed bronze door hardware
- ◆ Oversized fireplace with custom surround designed by Elizabeth Diehl

Gourmet Kitchen

- ◆ Painted, custom shaker kitchen cabinets
- ◆ New Imperial leathered and honed granite countertops
- ◆ Beautiful Indian Autumn tile backsplash selected by Elizabeth Diehl
- ◆ Stainless steel Jenn-Air appliance package which includes dishwasher, microwave, 36" gas cooktop, double oven and warming drawer
- ◆ Stainless steel under mount kitchen with 50/50 double bowl
- ◆ Xenon under cabinet lights in kitchen
- ◆ Moen Medora single hole oil rubbed faucet with sprayer

Master Bath Features

- ◆ Kashmir white granite countertops with white under-mount sinks
- ◆ Tiled shower with heavy glass shower doors
- ◆ Framed mirrors selected by Elizabeth Diehl
- ◆ Painted, custom shaker vanity cabinets in all baths
- ◆ Desert Gold tile floor designed by Elizabeth Diehl
- ◆ Moen Icon plumbing fixtures with oil rubbed finish
- ◆ 6' garden tub

Secondary Bath Features

- ◆ Cultured marble countertops on vanities with integrated rimless oval sinks
- ◆ Tiled floors and shower walls, designed by Elizabeth Diehl
- ◆ Moen Kingsley polished chrome fixtures
- ◆ Steel tubs in white with tile surrounds
- ◆ White American Standard Circa 1923 pedestal sink in powder

Exteriors

- ◆ Double pane, wood, low energy windows with simulated divided light muntins on front and sides
- ◆ Hardi-board siding, designed to last a lifetime, with up to 50 year warranty
- ◆ All landscape professionally designed by renown landscape architect, Steve Hausman, B.L.A.
- ◆ Fabral Galvalume metal roofs with lifetime film integrity warranty
- ◆ Gas outlet provided for exterior grill location

Energy Saving Benefits

- ◆ Earth Craft House™ & Energy Star™ certification
- ◆ Amana high efficiency heating and air units
- ◆ Blown in, Johns Manville Spider™ exterior wall insulation, includes special additive that resists mold
- ◆ Noritz N-0731 energy efficient tankless water heater

Electrical

- ◆ Two weatherproof exterior receptacles
- ◆ Ceiling fan pre-wire in all bedrooms
- ◆ Structured wiring system run to central panel including complete security system pre-wire, phone and cable outlets, with multi-line capability throughout the home
- ◆ Pre-wired for DVR's in family room and master bedroom
- ◆ Conduit for future flat screen TV's over fireplace

*Included Features are plan specific and may vary based on plan architecture and style.
Capstone Partners Inc. reserves the right to modify elevations floor plans product specifications and pricing without notice*