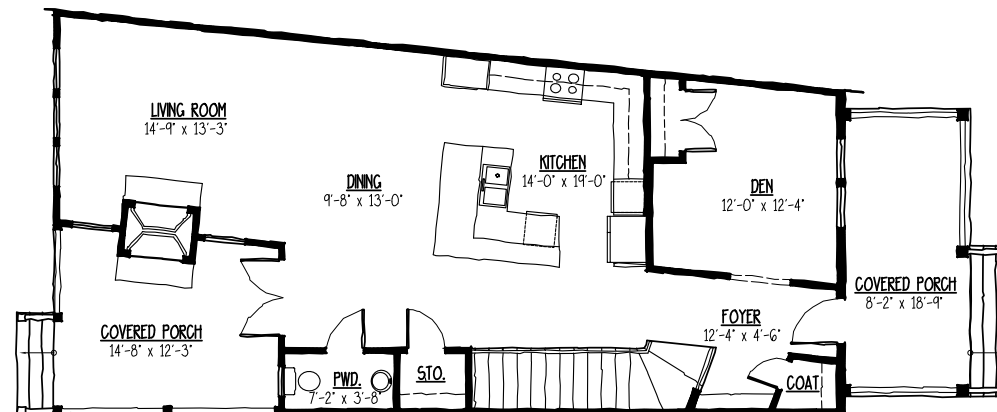
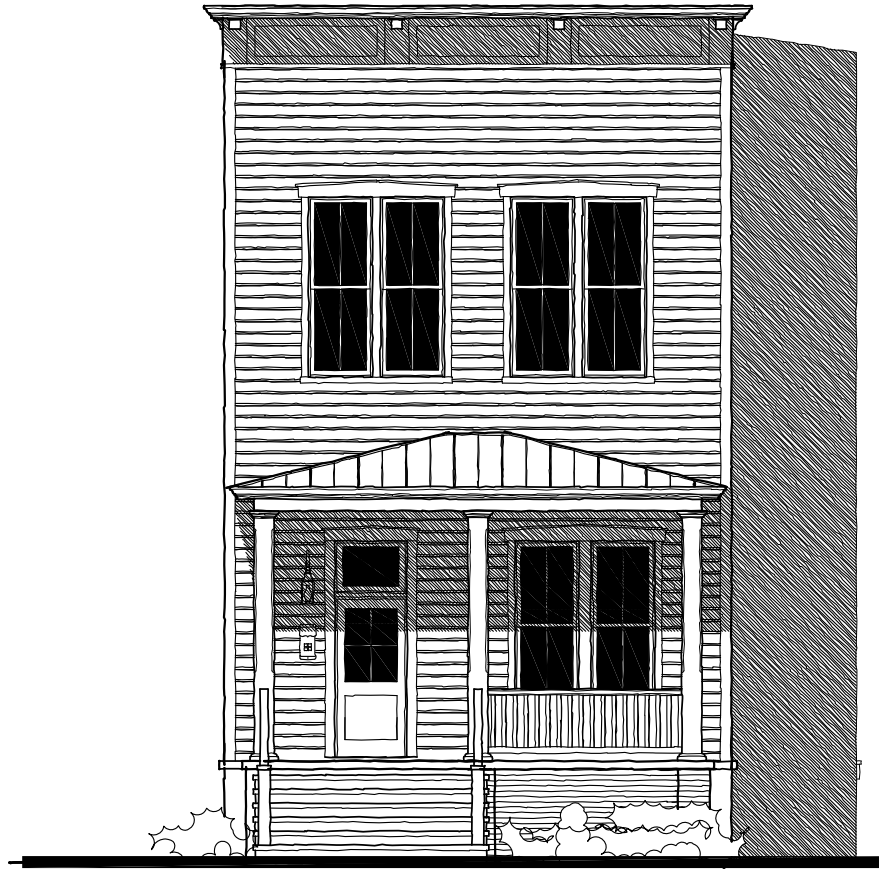


SECOND FLOOR PLAN



FIRST FLOOR PLAN

LOT 151- Serenbe Grange Townhomes



FRONT ELEVATION

LOT 151- Serenbe Grange Townhomes

In keeping with our philosophy, Capstone Partners hand selected a team of professionals to custom design The Grange Townhomes. These professionals who specialize in thoughtful and unique design; acclaimed architects Allison Ramsey, renown national designer Elizabeth Diehl of Diehl designs and expert landscape architect, Steve Hausman of Southeastern Landscaping worked together to create the Townhomes.

*Sage
10667 Serenbe Lane*

Interior Features

- ◆ Dramatic 12 foot ceilings on first and second floors
- ◆ Custom designed master closets
- ◆ Oak staircase
- ◆ Stained concrete on 1st floor, random width oak hardwood flooring on 2nd floor
- ◆ Separate laundry room with tiled floor designed By Elizabeth Diehl
- ◆ Lighting and paint colors selected by professional interior designer
- ◆ Round satin nickel finished door hardware
- ◆ Oversized fireplace with leathered and honed Aracruz black granite custom surround designed by Elizabeth Diehl

Gourmet Kitchen

- ◆ Painted, custom, square, flat paneled cabinets
- ◆ Luna Pearl granite countertops
- ◆ Stainless steel backsplash selected by Elizabeth Diehl
- ◆ Jenn-Air stainless steel appliance package which includes dishwasher, microwave oven, 36" gas cooktop, 30" double oven, and warming drawer
- ◆ Stainless steel apron front sink
- ◆ Moen polished chrome Aberdeen collection faucet

Master Bath Features

- ◆ Luna pearl granite countertops with stainless steel vessel sinks
- ◆ Tiled shower with heavy glass shower doors
- ◆ Framed mirror selected by Elizabeth Diehl
- ◆ Painted, custom, square, flat panel cabinets in all baths
- ◆ Lounge tile floor designed by Elizabeth Diehl
- ◆ Moen Icon plumbing fixtures with brushed nickel finish
- ◆ 6' period pedestal tub

Secondary Bath Features

- ◆ Cultured marble countertops on vanities with integrated rimless oval sinks
- ◆ Tiled floors and shower walls designed by Elizabeth Diehl
- ◆ Moen polished chrome fixtures
- ◆ Steel tubs in white with tile surrounds
- ◆ White American Standard Circa 1922 pedestal sink in powder

Exteriors

- ◆ Double pane, wood, low energy windows with simulated divided light muntins on front and sides
- ◆ Hardi-board siding, designed to last a lifetime, with up to 50 year warranty
- ◆ All landscape professionally designed by renown landscape architect, Steve Hausman, B.L.A.
- ◆ Fabral Galvalume metal porch roof with lifetime film integrity warranty
- ◆ Gas outlet provided for exterior grill location

Energy Saving Benefits

- ◆ Earth Craft House™ & Energy Star certification
- ◆ Amana high efficiency heating and air units
- ◆ Blown in, Johns Manville Spider™ exterior wall insulation, includes special additive that resists mold
- ◆ Noritz N-0731 energy efficient tankless water heater

Electrical

- ◆ Two weatherproof exterior receptacles
- ◆ Ceiling fan pre-wire in all bedrooms
- ◆ Structured wiring system run to central panel including complete security system pre-wire, phone and cable outlets, with multi-line capability throughout the home
- ◆ Pre-wired for DVR's in family room and master bedroom
- ◆ Conduit for future flat screen TV's over fireplace

*Included Features are plan specific and may vary based on plan architecture and style.
Capstone Partners Inc. reserves the right to modify elevations floor plans product specifications and pricing without notice*